

TIMETABLE FROM 01/04/2012 TO 11/11/2012

corsica ferries  sardinia ferries

SUMMER 2012.1

corsica

sardinia elba



corsica sardinia ferries



frequency
& quality



■ More than 190 crossings a week

between the mainland, Corsica and Sardinia in the high season!

A real choice of services

- Comfortable night crossings
- Fast day crossings



Aboard the Corsica Sardinia Ferries fleet you find quality services which make your ferry crossing a real moment of relaxation.

restaurants pool boutiques

■ More choice

Salons, restaurants, self-services, bar, cafeteria, pool, children's playrooms and boutiques are waiting for you.



■ Tariffs & Special Fares

Ask your travel agency or on www.corsicaferries.com
www.sardiniaferries.com

corsica sardinia ferries



**the
fleet**



speed, frequency, quality

Our fleet of ships is modern and with a great capacity, they offer you service and high quality standards



mega smeralda

Length: 171,50 m • Speed: 22 knots • Passengers: 2000 • Vehicles: 550 • Cabins: 539

The new high tech Mega ferries are fast during the day; convenient during the night. All amenities of a big ship: bar, boutiques, pool and much more. A la carte restaurant, cafeteria, pizzeria, spaghetti, self-service restaurant, pool, bars, children's playroom, boutiques, video games.

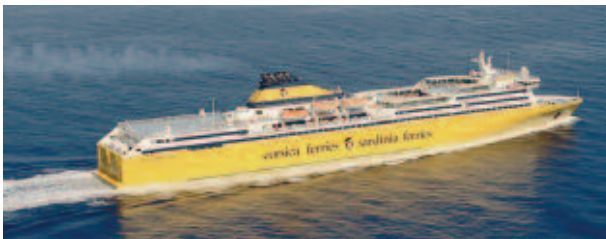


mega express, mega express two, mega express four, mega express five

As an example: mega express/mega express two

Construction year: 2001 • Length: 176 m • Passengers: 1880 • Vehicles: 550

• Speed: 29 knots • 300 cabins with 1200 beds



mega express three

mega express three

Construction year: 2001 • Reconstruction: 2003/04 • Length: 212 m • Passengers: 2100
• Vehicles: 650 • Speed: 30,5 knots • 370 cabins with 1450 beds.



corsica express II, corsica express III, sardinia express

sardinia express

• Construction year: 1996 • Length: 103 m
• Speed: 37 knots • Passengers: 535
• Vehicles: 150 • The fast high speed crafts
• Bar, Fast Food Restaurant, Boutique.



sardinia regina, corsica victoria

sardinia regina

• Passengers: 1700 • Cars: 400
• Length: 146 m • Speed: 19 knots
• 223 cabins (shower, WC) with 842 beds,

The classic cruise ferries with all amenities and special service. Cinema, boutiques, "a la Carte" restaurant, Cafeteria, auditorium, meeting room, pool.



corsica marina II, sardinia vera

corsica marina II

Corsica Shuttle®

• Passengers: 1500 • Cars: 550
• Length: 121 • Speed: 19 knots

The big daily ferries for a proper shuttle service up to 1500 passengers and 550 cars. Cafeteria, self-service restaurant, American Bar, boutiques, solarium.



all services are certified ISO 9001:2008

start your holidays in



the restaurant

Let your ferry crossing be a moment of relaxation and discover our restaurants, self-services and bars.



- With a **good breakfast** the day starts even better.
- **Bar and Fast food restaurant**, Spaghetteria, cafeteria, pizzeria, Self-Service and Bar offer many delicious meals and drinks.
- **The restaurant**
The A la carte restaurants belonging to the “Chaîne des Rotisseurs” look forward to welcoming you.
Just try the menu “Coup de Coeur”: aperitif and canapés, a starter of your choice, a pasta dish, meat or fish to select, cheese or dessert.



book your private room



the cabins

Book a cabin and enjoy a relaxing night or just relax during a day crossing. Almost all of our boats offer different types of cabins or you can just choose a reclining chair.



■ Night crossing

We recommend you to book a cabin for a night crossing. Cabins are sold exclusively for flat rate.

We would like to point out that not all types of cabins are the same or available on each boat. You have to leave the cabin 1 hour before arrival at disembarkation port.



■ Day crossing

You may book an exclusive cabin (2 beds) for a day crossing. Price per cabin from 30 € (surcharge of 10 € for 2 additional beds in the same cabin). You have to leave the cabin 30 minutes before arrival at disembarkation port. Cabins on morning crossings are available half an hour after the departure.



■ Also benefit from all the public areas accessible on our boats.



General terms and conditions

You may book your journey in your travel agency or through:

- internet: www.corsicaferries.com
www.sardiniaferries.com
- Savona-Italy
Tel. +39 019 21 56 809 - Fax + 39 019 21 55 300
E-mail: info@corsicaferries.com
- Bastia - Corsica
Tel. +33 4 95 32 95 95



Embarkation

Passengers travelling by car are requested to be at the terminal at least 1 hour before departure. Passengers without car shall be at the terminal at least 30 minutes before departure. Attention: at the end of the indicated time the embarkation cannot be guaranteed.



We may contact you

When making your reservation please leave your mobile phone No. (at best your telephone number at home and at vacation) in order to enable us to inform you also via SMS in due time on possible changes in the timetable.



The dimensions of vehicles must be declared, in particular vehicles exceeding 5 meters in length, **1,90 meters** in height and 2 meters in width.

You may view the "General Terms and Conditions" on our website www.corsicaferries.com. There you will find all information on the following subjects: reservation and method of payment, personal data, transportation of luggage and pets, terms and conditions of transportation, tariff conditions, fees in case of modification or cancellation, special tariffs for vehicles, dimensions of your vehicle, social tariffs, embarkation and disembarkation procedure, handicapped passengers, health condition, pregnant passengers.

Corsica ferries France SAS - Corsica routes

1. The issue of the present transport title by Corsica Ferries France SAS includes the acknowledgement by the passenger and/or vehicle owner in whose name the ticket was issued, of the conditions regulated by the laws of the state under which flag the ship is registered. In addition, the rules, dates and specific features of the general conditions of transport of Corsica Ferries will be acknowledged. They form an integral part of the ticket and can be viewed in the offices of the company, at their representatives as well as in embarkation and disembarkation offices and on the website:

www.corsicaferries.com

2. Appearance at embarkation

Passengers with vehicle: at least 1 hour prior to departure. Without vehicle: at least 30 minutes prior to departure. Passengers not checking in within the timeframe indicated above will lose their guarantee for transport even if they have made a reservation.

Corsica Ferries (France) SAS - 5 bis, rue Chanoine Leschi
BP 275 - 20296 BASTIA - Tel. +33 4 95 32 95 95

Information/ Customer Service:
E-mail info@corsicaferries.com

Forship S.p.A. Sardinia routes (excluded Santa Teresa/Bonifacio)

1. Transport is provided by Forship S.p.A. according to the general conditions of transport which can be viewed in the offices of the company, at the shipping agency and on the website www.sardiniaferries.com, as well as according to the conditions provided for in the Italian navigation laws and civil law.



During embarkation and disembarkation it is prohibited to stay within a radius of 50 meters around the ship.



Pets

Pets are generally welcome onboard our services. Their transportation is subject to a charge and has to be reserved beforehand.

Dogs have to be kept on a lead and have to wear a muzzle. Pets are not permitted in the Restaurant.

Danger of death: it is forbidden to leave animals in the car.



On embarkation or during the crossing you can be asked to show proof of identity and a copy of your ticket by Staff members.



MOBILE COVERAGE ONBOARD

Some of our ferries have GSM phone coverage, provided by Maritime Communications Partner MCP. The service is charged via your home operator. For exact pricing, please check with your home operator.

With the purchase of a ticket the passenger acknowledges the following clauses:

- Title of carriage - Ticket
- Cancellations and renunciations
- Rules to embark
- Liability and specific obligations of the passenger
- Liability and right of the carrier

2. Appearance at embarkation

Passengers with vehicle: at least 1 hour prior to departure. Without vehicle: at least 30 minutes prior to departure. Passengers not checking in within the timeframe indicated above will lose their guarantee for transport even if they have made a reservation.

The route S.ta Teresa-Bonifacio is operated by S.A.RE.MAR.SpA for which Corsica Ferries France SAS is only the agent.

Forship S.p.A. Calata Nord - 17047 Porto Vado
PIVA 01977660925 - Tel. +39 019 21 56 809

Information/ Customer Service:
E-mail info@corsicaferries.com

In case passages are cancelled due to bad weather the shipping company rejects any responsibility. This restriction also applies for incidents not depending on the shipping company. The crossing times are calculated on the basis of the distances between the ports. The shipping company is not liable for delays due to incidents in the ports.

corsica sardinia ferries



elba

New!

■ **Piombino/Portoferraio • Summer 2012**

New Route Piombino/ Portoferraio in 30 minutes!
From the 14th June to the 17th September.
6 departures per day!



Mainland • Elba

Piombino → Portoferraio

07:15 14:15

09:15 17:15

12:00 19:15

Elba • Mainland

Portoferraio → Piombino

08:15 15:45

10:45 18:15

13:15 20:15

6 departures per day!



Information and reservations: www.corsicaferries.com

Corsica-Mainland

APRIL

| Dep. - Arr. | S | M | T | W | T | F | S | S | M | T | W | T | F | S | S | M | T | W | T | F | S | S | M | T | W | T | F | S | S | M |
|--------------------------------------|----|---|----|----|---|----|----|---|---|----|----|----|----|----|----|----|----|----|----|----|----|----|----|----|----|----|----|----|----|----|
| | 1 | 2 | 3 | 4 | 5 | 6 | 7 | 8 | 9 | 10 | 11 | 12 | 13 | 14 | 15 | 16 | 17 | 18 | 19 | 20 | 21 | 22 | 23 | 24 | 25 | 26 | 27 | 28 | 29 | 30 |
| AJACCIO NICE 08:00 14:30 | | | | | | | 12 | | | | | | 12 | | | | | | | | 12 | | | | | | 12 | | | |
| TOULON 08:00 19:55 | | | | | | | | | | | | | | | | | | | | | | | | | | | | | | |
| 12:00 19:15 | | | | | | | | | | | 13 | | | | | | 13 | | | | | | | | | | | | | |
| 15:15 21:30 | | | | | | | 14 | | | | | | 14 | | | | | | | 14 | | | | | | 14 | | | | |
| 21:00 07:00 | | | | | | 7 | | | | | | 15 | | | | | | | 15 | | | | | | 15 | | | | | |
| 23:55 07:00 | | | | | | | | | | | | | | | | | | | | | | | | | | | | | | |
| BASTIA NICE 08:00 13:30 | | | | | | | 16 | | | | | | 16 | | | | | | 16 | | | | 16 | | | 16 | | | 16 | |
| TOULON 21:00 07:00 | | | | | | 15 | | | | | | 15 | | | | | | 15 | | | | | 15 | | | 15 | | | | |
| 22:30 08:00 | | | | | | | | | | | | | | | | | | | | | | | | | | | | | | |
| CALVI NICE 11:00 15:00 | | | | | | | | | | | | | | | | | | | | | | | | | | | | | | |
| ILE-ROUSSE TOULON 14:30 20:45 | | | | | | | | | | | | | | | | | | | | | | | | | | | | | | |
| BASTIA SAVONA 12:00 18:15 | 17 | | 18 | | | | | | | | | | | | | | | | | | | | | | | | | | | |
| 21:00 07:30 | | 6 | | | | | | | | | | | | | | | | | | | | | | | | | | | 6 | |
| LIVORNO 08:45 12:45 | | | | | | | | | | | | | | | | | | | | | | | | | | | | | | |
| 13:30 17:30 | | | | | | | | | | | | | | | | | | | | | | | | | | | | | | |
| 16:00 19:45 | | | | 20 | | | | | | | | | | | | | | | | | | | | | | | | | | |

MAY

| Dep. - Arr. | T | W | T | F | S | S | M | T | W | T | F | S | S | M | T | W | T | F | S | S | M | T | W | T | | | | | | |
|--------------------------------------|----|---|---|----|----|----|----|---|----|----|----|----|----|----|----|----|----|----|----|----|----|----|----|----|----|----|----|----|----|----|
| | 1 | 2 | 3 | 4 | 5 | 6 | 7 | 8 | 9 | 10 | 11 | 12 | 13 | 14 | 15 | 16 | 17 | 18 | 19 | 20 | 21 | 22 | 23 | 24 | 25 | 26 | 27 | 28 | 29 | 30 |
| AJACCIO NICE 08:00 14:15 | | | | 32 | 32 | | | | | | | 32 | | | | 32 | 12 | | | | 32 | | | 19 | | | | | | |
| TOULON 08:00 15:15 | | | | 4 | 4 | | | | | | | 4 | | | | 4 | | | | | 4 | | | | | | | | | |
| 12:00 19:15 | | | | | | | 13 | | | | | | | | | | | | | | | | | | | | | | | |
| 15:15 21:30 | | | | | 14 | | 14 | | | | 14 | | | | 14 | | 14 | | | | 14 | | | | 14 | | | | | |
| 21:00 07:00 | | | | 15 | | 15 | | | | 15 | | | | | 15 | | | | | | 15 | | | | 15 | | | | | |
| 22:00 07:00 | | | | | | | | | | | | | | | | | | 15 | | | | | | | | | | | | |
| 23:00 07:00 | | | | | 39 | | 39 | | | | 39 | | | | | | | | | | | | | | | | | | | |
| BASTIA NICE 08:00 13:30 | | | | 16 | | 40 | | | | 16 | 16 | | | 40 | 40 | | | | | | | | 16 | 40 | | | | | | |
| TOULON 08:00 19:30 | | | | | | | | | | | | | | | | | | | | | | | | | | | | | | |
| 21:00 07:00 | | | | 15 | | 15 | 41 | | 15 | 15 | | | | 15 | 41 | 15 | 41 | | | | 15 | | 15 | 41 | | | | | | |
| 22:30 08:00 | | | | | | | | | | | | | | | | | | | | | | | | | | | | | | |
| CALVI NICE 11:00 15:00 | | | | | | | | | | | | | | | | | | | | | | | | | | | 2 | | | |
| 15:00 20:45 | | | | | | | | | | | | | | | | | | | | | | | | | | | | | | |
| ILE-ROUSSE TOULON 12:30 19:30 | | | | | | | | | | | | | | | | | | | | | | | | | | | | | | |
| 14:30 20:45 | 42 | | | | | | | | | | | | | | | | | | | | | | | | | | | | | |
| BASTIA SAVONA 12:00 18:15 | | | | | | | | | | | | | | | | | | | | | | | | | | | | 43 | | |
| 15:30 21:45 | | | | | | | | | | | | | | | | | | | | | | | | | | | | | | |
| 21:00 06:45 | 7 | | | | | | | 7 | | | | 7 | | | | | 7 | | 7 | | | | | | | 7 | | | | |
| LIVORNO 08:45 12:45 | | | | | | | | | | | | | | | | | | | | | | | | | | | | | | |
| 13:30 17:30 | | | | | | | | | | | | | | | | | | | | | | | | | | | | | | |
| 16:00 19:45 | | | | | | | | | | | | | | | | | | | | | | | | | | | | | | |
| 23:55 06:30 | | | | | | | | | | | | | | | | | | | | | | | | | | | | | | |
| CALVI SAVONA 15:00 21:30 | | | | | | | | | | | | | | | | | | | | | | | | | | | | | | |

The numbers in the orange boxes indicate DIFFERENT TIMES - see page 10

| JUNE | | Dep. - Arr. | F | S | S | M | T | W | T | F | S | S | M | T | W | T | F | S | S | M | T | W | T | F | S | S | M | T | W | T | F | S |
|---------|------------|-------------|-------------|---|---|---|----|---|---|---|---|----|----|----|----|----|----|----|----|----|----|----|----|----|----|----|----|----|----|----|----|----|
| | | | 1 | 2 | 3 | 4 | 5 | 6 | 7 | 8 | 9 | 10 | 11 | 12 | 13 | 14 | 15 | 16 | 17 | 18 | 19 | 20 | 21 | 22 | 23 | 24 | 25 | 26 | 27 | 28 | 29 | 30 |
| TOULON | AJACCIO | 08:00 14:15 | 4 | 1 | 4 | 2 | 2 | | | 1 | 1 | 2 | 2 | | | 1 | 1 | 2 | 2 | | | 1 | 1 | 2 | 2 | | | 1 | | | | |
| | | 13:00 20:15 | | | | | | | | | | | | | | | | | | | | | | | | | | | | | | |
| | | 21:00 07:00 | | | | | | | | | | | | | | | | | | | | | | | | | | | | | | |
| | | 22:45 07:00 | | | | | | | | 5 | 5 | | | | | 5 | 5 | | | | | 5 | 5 | | | | | 5 | 15 | 5 | | |
| | | BASTIA | 21:00 07:00 | 6 | | 6 | | | | | 6 | 6 | | | | | 6 | 6 | | | | | 6 | 6 | | | | | 6 | | | |
| | BASTIA | 22:00 07:00 | | | | | | | | | | | | | | | | | | | | | | | | | | | | | | |
| | ILE-ROUSSE | 07:30 13:45 | | | | | | | | | | | | | | | | | | | | | | | | | | | | | | |
| NICE | AJACCIO | 13:30 19:55 | | | | | | | | | | | | | | | | | | | | | | | | | | | | | | |
| | | 15:00 21:15 | | | | | | | | | | | | | | | | | | | | | | | | 30 | | | | | 30 | |
| | BASTIA | 14:15 19:45 | 8 | | 8 | | | | | 8 | 8 | | | | | 8 | 8 | | | | | 8 | 8 | | | 8 | 8 | | | | 8 | |
| | CALVI | 08:15 14:00 | | | | | | | | | | | | | | | | | | | | | | | | | | | | | | |
| | | 13:45 19:30 | | | | | | | | | | | | | | | | | | | | | | | | | | | | | | |
| | ILE-ROUSSE | 07:00 12:00 | | | | | | | | | | | | | | | | | | | | | | | | | | | | | | |
| | ILE-ROUSSE | 13:45 19:30 | | | | | | | | | | | | | | | | | | | | | | | | | | | | | | |
| | ILE-ROUSSE | 22:00 06:00 | | | | | | | | | | | | | | | | | | | | | | | | | | | | | | |
| SAVONA | BASTIA | 08:00 14:15 | | | | | 29 | | | | | | | 29 | | | | | | | | 29 | | | | | | 29 | | | | |
| | | 21:00 07:30 | | | | | | | | | | | | | | | | | | | | | | | | | | | | | | |
| | | 23:00 07:30 | | | | | | | | | | | | | | | | | | | | | | | | | | | | | | |
| | CALVI | 07:30 14:00 | | | | | | | | | | | | | | | | | | | | | | | | | | | | | | |
| LIVORNO | BASTIA | 08:00 12:00 | | | | | | | | | | | | | | | | | | | | | | | | | | | | | | |
| | | 14:15 18:15 | | | | | | | | | | | | | | | | | | | | | | | | | | | | | | |
| | | 19:00 23:00 | | | | | | | | | | | | | | | | | | | | | | | | | | | | | | |

The numbers in the orange boxes indicate DIFFERENT TIMES – see page 10

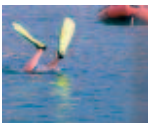
“Kalliste – the beauty”, the third largest island which is situated in the Western Mediterranean Sea rightly deserves this adorning epithet.



Corsica-Mainland

| JULY | | Dep. - Arr. | | S | M | T | W | T | F | S | S | M | T | W | T | F | S | S | M | T | W | T | F | S | S | M | T | W | T | F | S | S | M | T | |
|------------|---------|-------------|-------|----|---|---|---|---|----|----|----|----|----|----|----|----|----|----|----|----|----|----|----|----|----|----|----|----|----|----|----|----|---|---|--|
| | | 1 | 2 | 3 | 4 | 5 | 6 | 7 | 8 | 9 | 10 | 11 | 12 | 13 | 14 | 15 | 16 | 17 | 18 | 19 | 20 | 21 | 22 | 23 | 24 | 25 | 26 | 27 | 28 | 29 | 30 | 31 | | | |
| AJACCIO | NICE | 08:00 | 14:15 | | | | | | | 31 | | | | | | | 31 | | | | | | | | | | | | | | | | | | |
| | | 21:00 | 06:15 | | | | | | | | | | | | | | | | | | | | | | | | | | | | | | | | |
| | TOULON | 08:00 | 15:45 | | | | | | | | | | | | | | | | | | | | | | | | | | | | | | | | |
| | | 11:00 | 18:45 | | | | | | | | | | | | | | | | | | | | | | | | | | | | | | | | |
| | | 15:00 | 21:45 | | | | | | | | | | | | | | | | | | | | | | | | | | | | | | | | |
| | | 15:15 | 21:30 | | | | | | | | | | | | | | | | | | | | | | | | | | | | | | | | |
| | | 21:00 | 07:00 | | | | | | | | | | | | | | | | | | | | | | | | | | | | | | | | |
| 22:00 | 07:00 | | | | | | | | | 15 | | | | | | | 15 | | | | | | | | | | | | | | | | | | |
| BASTIA | NICE | 08:00 | 13:30 | | | | | | | 16 | | | | | | | 16 | | | | | | | | | | | | | | | | | | |
| | TOULON | 21:00 | 07:00 | 15 | | | | | 15 | 15 | | | 15 | 15 | 15 | | 15 | | | | | | | | | | | | | | | | | | |
| | | 22:30 | 08:00 | | | | | | | | | | | | | | | | | | | | | | | | | | | | | | | | |
| CALVI | NICE | 15:00 | 20:45 | | | | | | | | | | | | | | | | | | | | | | | | | | | | | | | | |
| | | 21:00 | 07:00 | | | | | | | | | | | | | | | | | | | | | | | | | | | | | | | | |
| ILE-ROUSSE | TOULON | 12:45 | 20:00 | | | | | | | | | | | | | | | | | | | | | | | | | | | | | | | | |
| | | 14:30 | 20:45 | | | | | | | | | | | | | | | | | | | | | | | | | | | | | | | | |
| | NICE | 07:00 | 12:45 | | | | | | | | | | | | | | | | | | | | | | | | | | | | | | | | |
| | | 17:00 | 22:00 | | | | | | | | | | | | | | | | | | | | | | | | | | | | | | | | |
| 21:00 | 07:00 | | | | | | | | | | | | | | | | | | | | | | | | | | | | | | | | | | |
| BASTIA | SAVONA | 08:45 | 15:00 | | | | | | | | | | | | | | | | | | | | | | | | | | | | | | | | |
| | | 15:30 | 21:45 | | | | | | | | | | | | | | | | | | | | | | | | | | | | | | | | |
| | | 21:00 | 06:45 | | | 7 | | | | | | 7 | | | | | | | | | | | | | | | | | | | | | | | |
| | LIVORNO | 08:45 | 12:45 | | | | | | | | | | | | | | | | | | | | | | | | | | | | | | | | |
| | | 13:30 | 17:30 | | | | | | | | | | | | | | | | | | | | | | | | | | | | | | | | |
| 23:55 | 06:30 | | | | | | | | | | | | | | | | | | | | | | | | | | | | | | | | | | |
| CALVI | SAVONA | 20:30 | 06:00 | | | | | | | | | | | | | | | | | | | | | | | | | | | | | | | | |

The numbers in the orange boxes indicate DIFFERENT TIMES – see page 10



The stated departure and arrival times are indicative. You can find the exact times on our website www.corsicaferies.com or on your ticket.

Corsica-Mainland

AUGUST

| | | Dep. - Arr. | | W | T | F | S | S | M | T | W | T | F | S | S | M | T | W | T | F | S | S | M | T | W | T | F | | | | | |
|------------|--------|-------------|-------|---|----|----|---|---|---|----|----|----|----|----|----|----|----|----|----|----|----|----|----|----|----|----|----|----|----|----|----|----|
| | | 1 | 2 | 3 | 4 | 5 | 6 | 7 | 8 | 9 | 10 | 11 | 12 | 13 | 14 | 15 | 16 | 17 | 18 | 19 | 20 | 21 | 22 | 23 | 24 | 25 | 26 | 27 | 28 | 29 | 30 | 31 |
| AJACCIO | NICE | 07:00 | 14:00 | | | | | | | | | | | | | | | | | | | | | | | | | | | | | |
| | | 08:00 | 14:15 | | | 31 | | | | | | | 31 | | | | | | | | 31 | | | | | 31 | | | | | | |
| | | 21:00 | 06:15 | | | | | | | | | | | | | | | | | | | | | | | | | | | | | |
| | | 23:00 | 06:15 | | | | | | | | | | | | | | | | | | | | | | | | | | | | | |
| | | 08:00 | 14:15 | | | | | | | 3 | | | | | | | 2 | | | | | | | | 2 | | | | | | 2 | |
| | TOULON | 09:00 | 16:45 | | | | | | | | | | | | | | | | | | | | | | | | | | | | | |
| | | 11:00 | 18:45 | | | | | | | | | | | | | | | | | | | | | | | | | | | | | |
| | | 12:00 | 19:15 | | | | | | | | | | | | | | | | | | | | | | | | | | | | | |
| | | 15:00 | 21:45 | | | | | | | | | | | | | | | | | | | | | | | | | | | | | |
| | | 15:15 | 21:30 | | | | | | | | | | | | | | | | | | | | | | | | | | | | | |
| 21:00 | | 07:00 | | | | | | | | | | | | | | | | | | | | | | | | | | | 47 | 47 | | |
| 22:00 | | 07:00 | | | 15 | | | 5 | | | 15 | | | 5 | | | 15 | | | | | | 15 | | | 15 | | 5 | | | | |
| 23:00 | | 08:00 | | | | | | | | | | | | | | | | | | | | | | | | | | | | | | |
| BASTIA | NICE | 08:00 | 13:30 | | | 16 | | | | 31 | | | 16 | | | 31 | | | 16 | | | 31 | | | 16 | | | | 31 | | | |
| | TOULON | 21:00 | 06:30 | | | | | | 9 | 48 | | | | | 9 | 48 | | | | | | 9 | 48 | | | | | 9 | 48 | | | |
| CALVI | NICE | 15:00 | 20:45 | | | | | | | | | | | | | | | | | | | | | | | | | | | | | |
| | | 21:00 | 07:00 | | | | | | | | | | | | | | | | | | | | | | | | | | | | | |
| ILE-ROUSSE | TOULON | 12:45 | 20:00 | | | | | | | | | | | | | | | | | | | | | | | | | | | | | |
| | | 14:30 | 20:45 | | | | | | | | | | | | | | | | | | | | | | | | | | | | | |
| BASTIA | SAVONA | 08:45 | 15:00 | | | | | | | | | | | | | | | | | | | | | | | | | | | | | |
| | | 15:30 | 21:45 | | | | | | | | | | | | | | | | | | | | | | | | | | | | | |
| | | 21:00 | 06:45 | | | | | | 7 | | | | | | 7 | | | | | | | | 7 | | | | | | 7 | | | |
| LIVORNO | 08:45 | 12:45 | | | | | | | | | | | | | | | | | | | | | | | | | | | | | | |
| | 13:30 | 17:30 | | | | | | | | | | | | | | | | | | | | | | | | | | | | | | |
| | 23:55 | 06:30 | | | | | | | | | | | | | | | | | | | | | | | | | | | | | | |
| CALVI | SAVONA | 20:30 | 06:00 | | | | | | | | | | | | | | | | | | | | | | | | | | | | | |

The numbers in the orange boxes indicate DIFFERENT TIMES – see page 10



The stated departure and arrival times are indicative. You can find the exact times on our website www.corsicaferries.com or on your ticket.

| SEPTEMBER | | Dep. - Arr. | S | S | M | T | W | T | F | S | S | M | T | W | T | F | S | S | M | T | W | T | F | S | S | M | T | W | T | F | S | S | | |
|------------------|-------------|-------------|-------------|----|----|----|---|---|----|---|---|----|----|----|----|----|----|----|----|----|----|----|----|----|----|----|----|----|----|----|----|----|----|--|
| | | | 1 | 2 | 3 | 4 | 5 | 6 | 7 | 8 | 9 | 10 | 11 | 12 | 13 | 14 | 15 | 16 | 17 | 18 | 19 | 20 | 21 | 22 | 23 | 24 | 25 | 26 | 27 | 28 | 29 | 30 | | |
| TOULON | AJACCIO | 08:00 14:15 | | | | | | | | | | | | | | | | | | | | | | | | | | | | | | | | |
| | | 11:00 18:45 | | | | | | | | | | | | | | | | | | | | | | | | | | | | | | | | |
| | | 21:00 07:00 | | | | | | | | | | | | | | | | | | | | | | | | | | | | | | | | |
| | | 22:45 07:00 | 5 | | 5 | | | | | 5 | | 5 | | | | | 5 | | | | | | 15 | 5 | 7 | | | | | 5 | 7 | | | |
| | BASTIA | 08:00 19:30 | | | | | | | | | | | | | | | | | | | | | | | | | | | | | | | | |
| | | 21:00 07:00 | | | | | | | | 6 | | | | | | 6 | | | | | | | | 6 | | | | | | | 6 | 7 | | |
| | | 22:00 07:00 | | | 37 | | | | | | | 37 | | | | | | | | | | | | | | | | | | | | | | |
| | ILE-ROUSSE | 07:30 13:45 | | | | | | | | | | | | | | | | | | | | | | | | | | | | | | | | |
| | | 09:00 16:15 | | | | | | | | | | | | | | | | | | | | | | | | | | | | | | | | |
| | NICE | AJACCIO | 15:00 21:15 | 30 | | 49 | | | | | | | | | | | | | | | | | | 25 | 25 | 26 | | | | | 25 | 25 | 26 | |
| 23:00 06:15 | | | | | | | | | | | | 47 | | | | | | | | | | | | | | | | | | | | | | |
| BASTIA | | 14:15 19:45 | 8 | | | | | | | 8 | | | | | | | 8 | | 50 | | | | 8 | 8 | | | | | | 8 | | | | |
| | | 08:15 14:00 | | | | | | | | | | | | | | | | | | | | | | | | | | | | | | | | |
| CALVI | | 13:45 19:30 | | | | | | | | | | | | | | | | | | | | | | | | | | | | | | | | |
| | | 16:00 20:00 | | | | | | | | | | | | | | | | | | | | | | | | | | | | | | | | |
| | | 22:00 07:00 | | | | | | | | | | | | | | | | | | | | | | | | | | | | | | | | |
| | | 07:00 12:00 | | | | | | | | | | | | | | | | | | | | | | | | | | | | | | | | |
| ILE-ROUSSE | | 22:00 06:00 | | | | | | | | | | | | | | | | | | | | | | | | | | | | | | | | |
| SAVONA | | BASTIA | 08:00 14:15 | | | | | | 29 | | | | | | | | | | | | | | | 29 | | | | | | 29 | | | | |
| | 15:30 21:45 | | | | | | | | | | | | | | | | | | | | | | | | | | | | | | | | | |
| | 21:00 07:30 | | | | | | | | | | | | | | | | | | | | | | | | | | | | | | | | | |
| | 23:00 07:30 | | | | | | | | | | | | | | | | 6 | | | | | | | | | | | | | | | | | |
| | CALVI | 07:30 14:00 | | | | | | | | | | | | | | | | | | | | | | | | | | | | | | | | |
| LIVORNO | BASTIA | 08:00 12:00 | | | | | | | | | | | | | | | | | | | | | | | | | | | | | | | | |
| | | 14:15 18:15 | | | | | | | | | | | | | | | | | | | | | | | | | | | | | | | | |
| | | 19:00 23:00 | | | | | | | | | | | | | | | | | | | | | | | | | | | | | | | | |

The numbers in the orange boxes indicate DIFFERENT TIMES – see page 10



Corsica-Mainland

| SEPTEMBER | | Dep. - Arr. | S | S | M | T | W | T | F | S | S | M | T | W | T | F | S | S | M | T | W | T | F | S | S | M | T | W | T | F | S | S | |
|-------------------|----------------|-------------|----|----|----|---|----|----|----|----|----|----|----|----|----|----|----|----|----|----|----|----|----|----|----|----|----|----|----|----|----|----|----|
| | | | 1 | 2 | 3 | 4 | 5 | 6 | 7 | 8 | 9 | 10 | 11 | 12 | 13 | 14 | 15 | 16 | 17 | 18 | 19 | 20 | 21 | 22 | 23 | 24 | 25 | 26 | 27 | 28 | 29 | 30 | |
| AJACCIO | NICE | 08:00 14:15 | 31 | 52 | | | | | | | | | | | | | | | | | | | | | | | | | | | | | |
| | | 21:00 06:15 | | | | | | | | | | | | | | | | | | | | | | | | | | | | | | | |
| | TOULON | 08:00 15:15 | | | | | | | | | | | | | | | | | | | | | | | | | | | | | | | |
| | | 12:00 19:15 | | | | | | | | | | | | | | | | | | | | | | | | | | | | | | | |
| | | 15:15 21:30 | | 14 | | | | | 14 | | 14 | | | | | 14 | | 14 | | | | | | 14 | | 14 | | | | | 14 | | 14 |
| | | 21:00 07:00 | | | | | | | | | | | | | | | | | | | | | | | | | | | | | | | |
| | | 22:00 07:00 | | 15 | | | | | | | 15 | | | | | | | 15 | | | | | | | | | | | | | | | |
| 23:00 07:00 | | | | 47 | | | | | | | | | | | | | | | | | | | | | | | | | | | | | |
| BASTIA | NICE | 08:00 13:30 | 16 | | | | | | | 16 | | | | | | | 16 | | 24 | | | | 16 | | 16 | | | | | 16 | | | |
| | | 08:00 19:55 | | | | | | | | | | | | | | | | | | | | | | | | | | | | | | | |
| | TOULON | 21:00 07:00 | | 15 | 15 | | | 15 | 15 | | | | | | 15 | 15 | | | | | | | 15 | 15 | | | | | 15 | 7 | | | |
| | | 22:30 08:00 | | | | | | | | | | | | | | | | | | | | | | | | | | | | | | | |
| CALVI | NICE | 11:00 15:00 | | | | | | | | | | | | | | | | | | | | | | | | | | | | | 2 | | |
| | | 15:00 20:45 | | | | | | | | | | | | | | | 53 | | | | | | | | | | | | | | | | |
| | | 21:00 07:00 | | | | | | | | | | | | | | | | | | | | | | | | | | | | | | | |
| ILE-ROUSSE | TOULON | 12:45 20:00 | | | | | | | | | | | | | | | | | | | | | | | | | | | | | | | |
| | | 14:30 20:45 | | | | | | | | | | | | | | | | | | | | | | | | | | | | | | | |
| | NICE | 07:00 12:45 | | | | | | | | | | | | | | | | | | | | | | | | | | | | | | | |
| | | 11:00 15:15 | | | | | | | | | | | | | | | | | | | | | | | | | | | | | | | |
| | | 17:00 22:00 | | | | | | | | | | | | | | | | | | | | | | | | | | | | | | | |
| BASTIA | SAVONA | 08:00 14:15 | | | | | 43 | | | | | | | 35 | | | | | | | | | | | | | | | | | | | |
| | | 15:30 21:45 | | | | | | | | | | | | | | | | | | | | | | | | | | | | | | | |
| | | 21:00 06:45 | | | | 7 | | | | | 7 | 7 | 7 | | | | | | 7 | | 7 | | | | | 7 | | 7 | | | | | |
| | 23:00 06:45 | | | | | | | | | | | | | | | | | | | | | | | | | | | | | | | | |
| | LIVORNO | 08:45 12:45 | | | | | | | | | | | | | | | | | | | | | | | | | | | | | | | |
| | | 13:30 17:30 | | | | | | | | | | | | | | | | | | | | | | | | | | | | | | | |
| | | 23:55 06:30 | | | | | | | | | | | | | | | | | | | | | | | | | | | | | | | |
| CALVI | SAVONA | 20:30 06:00 | | | | | | | | | | | | | | | | | | | | | | | | | | | | | | | |

The numbers in the orange boxes indicate DIFFERENT TIMES – see page 10



The stated departure and arrival times are indicative. You can find the exact times on our website www.corsicaferies.com or on your ticket.

Corsica-Mainland

| OCTOBER | | | M | T | W | T | F | S | S | M | T | W | T | F | S | S | M | T | W | T | F | S | S | M | T | W | | | | | | | | |
|----------------|----------------|-------------|---|---|---|---|---|----|---|---|---|----|----|----|----|----|----|----|----|----|----|----|----|----|----|----|----|----|----|----|----|----|----|--|
| | | Dep. - Arr. | 1 | 2 | 3 | 4 | 5 | 6 | 7 | 8 | 9 | 10 | 11 | 12 | 13 | 14 | 15 | 16 | 17 | 18 | 19 | 20 | 21 | 22 | 23 | 24 | 25 | 26 | 27 | 28 | 29 | 30 | 31 | |
| AJACCIO | NICE | 08:00 14:30 | | | | | | 12 | | | | | | | 12 | | | | | | | | | | | | | | | | | | | |
| | TOULON | 08:00 15:45 | | | | | | 4 | | | | | | | | | | | | | | | | 4 | | | | | | | | | | |
| | | 15:00 21:45 | | | | | | | | | | | | | | | | | | | | | | | | | | | | | | | | |
| | | 20:00 07:00 | | | | | | | | | | | | | 7 | | | | | | | | 7 | 47 | | | | | | | | | 47 | |
| | | 21:00 07:00 | | | | | | 7 | | | | | | | | | | | | | | | | | | | | 15 | | | | | | |
| | 23:15 07:00 | | | | | | | | | | | | | | 61 | | | | | | | | | | | | | | | | | | | |
| BASTIA | NICE | 08:00 13:30 | | | | | | 16 | | | | | | | | | | | | | | | | | | | | 24 | 24 | | | | | |
| | TOULON | 20:00 07:00 | | | | | | | | | | | | | | | | | | | | | | | | | | 62 | 62 | | | | 47 | |
| | | 21:00 07:00 | | | | | | 15 | | | | | | | 15 | 47 | | | | | | 7 | | | | | | | | | | | | |
| CALVI | NICE | 11:00 15:00 | | | | | | | | | | | | | | | | | | | | | | | | | | | 63 | | | | | |
| BASTIA | SAVONA | 12:00 18:15 | | | | | | | | | | | | | | | | | | | | | | | | | | | | | | | | |
| | | 20:00 07:30 | | | | | | | | | | | | | | | | | | | | | | | | | | | | | | | | |
| | LIVORNO | 08:45 12:45 | | | | | | | | | | | | | | | | | | | | | | | | | | | | | | | | |
| | | 13:30 17:30 | | | | | | | | | | | | | | | | | | | | | | | | | | | | | | | | |
| | 16:00 19:45 | | | | | | | | | | | | | | | | | | | | | | | | | | | | | | | | | |
| CALVI | SAVONA | 12:00 18:15 | | | | | | | | | | | | | | | | | | | | | | | | | | | | | | | | |

The numbers in the orange boxes indicate DIFFERENT TIMES – see page 10



| NOVEMBER | | | T | F | S | S | M | T | W | T | F | S | S |
|-----------------|---------------|-------------|---|---|---|----|----|---|---|---|---|----|----|
| | | Dep. - Arr. | 1 | 2 | 3 | 4 | 5 | 6 | 7 | 8 | 9 | 10 | 11 |
| AJACCIO | NICE | 07:45 15:00 | | | | | | | | | | | |
| | | 20:00 06:00 | | | | | | | | | | | |
| | TOULON | 12:00 19:15 | | | | | 14 | | | | | | |
| | | 20:00 07:00 | | | | | 15 | | | | | | |
| | | 20:00 11:00 | | | | | | | | | | | |
| | 21:00 07:00 | | | | | | | | | | | | |
| | 23:55 07:00 | | | | | | | | | | | | |
| BASTIA | NICE | 08:00 13:30 | | | | 64 | 64 | | | | | | |
| | TOULON | 08:00 19:30 | | | | | | | | | | | |
| 20:00 07:00 | | | | | | | | | | | | | 47 |
| 21:00 07:00 | | | | | 7 | 47 | | | | | | 7 | |
| | 23:55 07:00 | | | | | | | | | | | | |
| CALVI | NICE | 11:00 15:00 | | | | | | | | | | | |
| BASTIA | SAVONA | 20:00 07:30 | | | | | | | | | | | |
| | | 13:30 17:30 | | | | | | | | | | | |



The stated departure and arrival times are indicative. You can find the exact times on our website www.corsicaferries.com or on your ticket.

Sardinia-Mainland

| APRIL | | S | M | T | W | T | F | S | S | M | T | W | T | F | S | S | M | T | W | T | F | S | S | M | | | | | | | | |
|-------------------|-------------|----|---|---|---|----|----|----|----|---|----|----|----|----|----|----|----|----|----|----|----|----|----|----|----|----|----|----|----|----|----|----|
| Dep. - Arr. | | 1 | 2 | 3 | 4 | 5 | 6 | 7 | 8 | 9 | 10 | 11 | 12 | 13 | 14 | 15 | 16 | 17 | 18 | 19 | 20 | 21 | 22 | 23 | 24 | 25 | 26 | 27 | 28 | 29 | 30 | |
| G.ARANCI LIVORNO | 12:00 18:30 | | | | | | 13 | 13 | 13 | | | | | | 21 | 21 | 21 | | | | | 21 | | | | | | | | | | |
| | 21:00 07:00 | | 6 | | | | | | | | | | | | | | | | | | | | | | | | | | | | | |
| MAY | | T | W | T | F | S | S | M | T | W | T | F | S | S | M | T | W | T | F | S | S | M | T | W | T | | | | | | | |
| Dep. - Arr. | | 1 | 2 | 3 | 4 | 5 | 6 | 7 | 8 | 9 | 10 | 11 | 12 | 13 | 14 | 15 | 16 | 17 | 18 | 19 | 20 | 21 | 22 | 23 | 24 | 25 | 26 | 27 | 28 | 29 | 30 | 31 |
| G.ARANCI LIVORNO | 12:00 18:30 | 21 | | | | 21 | | | | | | 21 | | | | | | | 21 | | | | | | | | | | | | | |
| | 15:30 21:55 | | | | | | | | | | | | | | | | | | | | | | | | | | | | | | | |
| | 21:00 07:00 | | | | | | | | | | | | | | | | | | | | | | | | | | | | | | | |
| G.ARANCI CIVITAV. | 08:15 13:45 | | | | | | | | | | | | | | | | | | | | | | | | | | | | | | | |
| JUNE | | F | S | S | M | T | W | T | F | S | S | M | T | W | T | F | S | S | M | T | W | T | F | S | | | | | | | | |
| Dep. - Arr. | | 1 | 2 | 3 | 4 | 5 | 6 | 7 | 8 | 9 | 10 | 11 | 12 | 13 | 14 | 15 | 16 | 17 | 18 | 19 | 20 | 21 | 22 | 23 | 24 | 25 | 26 | 27 | 28 | 29 | 30 | |
| G.ARANCI LIVORNO | 08:15 14:45 | | | | | | | | | | | | | | | | | | | | | | | | | | | | | | | |
| | 12:00 18:30 | | | | | | | | | | | | | | | | | | | | | | | | | | | | | | | |
| | 15:30 21:55 | | | | | | | | | | | | | | | | | | | | | | | | | | | | | | | |
| | 21:00 07:00 | | | | | | | | | | | | | | | | | | | | | | | | | | | | | | | |
| G.ARANCI CIVITAV. | 08:15 13:45 | | | | | | | | | | | | | | | | | | | | | | | | | | | | | | | |
| JULY | | S | M | T | W | T | F | S | S | M | T | W | T | F | S | S | M | T | W | T | F | S | S | M | T | | | | | | | |
| Dep. - Arr. | | 1 | 2 | 3 | 4 | 5 | 6 | 7 | 8 | 9 | 10 | 11 | 12 | 13 | 14 | 15 | 16 | 17 | 18 | 19 | 20 | 21 | 22 | 23 | 24 | 25 | 26 | 27 | 28 | 29 | 30 | 31 |
| G.ARANCI LIVORNO | 08:15 14:45 | | | | | | | | | | | | | | | | | | | | | | | | | | | | | | | |
| | 15:30 21:55 | | | | | | | | | | | | | | | | | | | | | | | | | | | | | | | |
| | 21:00 07:00 | | | | | | | | | | | | | | | | | | | | | | | | | | | | | | | |
| G.ARANCI CIVITAV. | 08:15 13:45 | | | | | | | | | | | | | | | | | | | | | | | | | | | | | | | |
| AUGUST | | W | T | F | S | S | M | T | W | T | F | S | S | M | T | W | T | F | S | S | M | T | W | T | F | | | | | | | |
| Dep. - Arr. | | 1 | 2 | 3 | 4 | 5 | 6 | 7 | 8 | 9 | 10 | 11 | 12 | 13 | 14 | 15 | 16 | 17 | 18 | 19 | 20 | 21 | 22 | 23 | 24 | 25 | 26 | 27 | 28 | 29 | 30 | 31 |
| G.ARANCI LIVORNO | 08:15 14:45 | | | | | | | | | | | | | | | | | | | | | | | | | | | | | | | |
| | 15:30 21:55 | | | | | | | | | | | | | | | | | | | | | | | | | | | | | | | |
| | 21:00 07:00 | | | | | | | | | | | | | | | | | | | | | | | | | | | | | | | |
| G.ARANCI CIVITAV. | 8:15 13:45 | | | | | | | | | | | | | | | | | | | | | | | | | | | | | | | |
| SEPTEMBER | | S | S | M | T | W | T | F | S | S | M | T | W | T | F | S | S | M | T | W | T | F | S | S | | | | | | | | |
| Dep. - Arr. | | 1 | 2 | 3 | 4 | 5 | 6 | 7 | 8 | 9 | 10 | 11 | 12 | 13 | 14 | 15 | 16 | 17 | 18 | 19 | 20 | 21 | 22 | 23 | 24 | 25 | 26 | 27 | 28 | 29 | 30 | |
| G.ARANCI LIVORNO | 08:15 14:45 | | | | | | | | | | | | | | | | | | | | | | | | | | | | | | | |
| | 12:00 18:30 | | | | | | | | | | | | | | | | | | | | | | | | | | | | | | | |
| | 15:30 21:55 | | | | | | | | | | | | | | | | | | | | | | | | | | | | | | | |
| | 21:00 07:00 | | | | | | | | | | | | | | | | | | | | | | | | | | | | | | | |
| G.ARANCI CIVITAV. | 08:15 13:45 | | | | | | | | | | | | | | | | | | | | | | | | | | | | | | | |
| OCTOBER | | M | T | W | T | F | S | S | M | T | W | T | F | S | S | M | T | W | T | F | S | S | M | T | W | | | | | | | |
| Dep. - Arr. | | 1 | 2 | 3 | 4 | 5 | 6 | 7 | 8 | 9 | 10 | 11 | 12 | 13 | 14 | 15 | 16 | 17 | 18 | 19 | 20 | 21 | 22 | 23 | 24 | 25 | 26 | 27 | 28 | 29 | 30 | 31 |
| G.ARANCI LIVORNO | 11:00 19:45 | | | | | | | | | | | | | | | | | | | | | | | | | | | | | | | |
| | 20:00 07:00 | | | | | | | | | | | | | | | | | | | | | | | | | | | | | | | |
| G.ARANCI LIVORNO | 20:00 07:00 | | | | | | | | | | | | | | | | | | | | | | | | | | | | | | | |
| NOVEMBER | | T | F | S | S | M | T | W | T | F | S | S | | | | | | | | | | | | | | | | | | | | |
| Dep. - Arr. | | 1 | 2 | 3 | 4 | 5 | 6 | 7 | 8 | 9 | 10 | 11 | | | | | | | | | | | | | | | | | | | | |
| G.ARANCI LIVORNO | 20:00 07:00 | | | 7 | 7 | | | | | | 7 | 7 | | | | | | | | | | | | | | | | | | | | |

| The numbers in the orange boxes indicate DIFFERENT TIMES | |
|--|---------------------------------|
| 3 | Arrival 15:45 |
| 6 | Arrival 06:45 |
| 7 | Arrival 07:30 |
| 11 | Arrival 16:45 |
| 13 | Departure 11:00 - Arrival 18:45 |
| 21 | Departure 11:00 - Arrival 19:45 |
| 47 | Arrival 08:00 |

The stated departure and arrival times are indicative. You can find the exact times on our website www.corsicaferries.com or on your ticket.

Timetable from 01/04/2012 to 11/11/2012

RESERVATIONS

www.corsicaferries.com
www.sardiniaferries.com

OFFICES

BASTIA

5 bis, rue Chanoine Leschi
20296 BASTIA
Tel. 04 95 32 95 95
Fax 04 95 32 14 71

SAVONA

Calata Nord
17047 PORTO VADO
Tel. 019 215 511
Fax 019 2155300

EMBARKATION OFFICES

NICE

Port de Commerce
Tel. 04 92 00 42 76
04 95 55 03 93
Fax 04 92 00 42 94

TOULON

Port de Commerce
Tel. 04 94 41 11 89
Fax 04 94 41 12 54

AJACCIO

Gare maritime
Tel. 04 95 50 78 82
Fax 04 95 50 78 83

BASTIA

Gare maritime
Tel. 04 95 32 95 94
Fax 04 95 32 95 55

CALVI

Port de Commerce
Tel. 04 95 65 43 21
Fax 04 95 65 43 22

ILE ROUSSE

Gare maritime
Tel. 04 95 60 44 11
Fax 04 95 60 42 96

SAVONA-PORTO VADO

Calata Nord
Tel. 019 215 6247
Fax 019 215 6260

LIVORNO

Nuova Stazione Marittima
Calata Carrara
Tel. 0586 881380
Fax 0586 896103

CIVITAVECCHIA

Terminal Autostrade del Mare
Tel. 0766 500 714
Fax 0766 500 718

GOLFO ARANCI

Nuova stazione marittima
Tel. 0789 46780
Fax 0789 615180

INFORMATION/ CUSTOMER SERVICE

info@corsicaferries.com

This document is not contractual.
The information, tariffs and rules
can be modified anytime.
Timetable and fares the
20/12/2011 except printing
errors.
Printed on recycled paper
without bleaching agent.



Your Travel Agent